



5kW FPD Surgical C-arm  
**Garion**

# Experience The Difference

Fine-Tuned Movement  
5kW FPD Surgical C-arm



Garion is a compact and versatile digital surgery system.  
It is aimed to help you save space and improve work efficiency.  
It has minimal post-sales expenditures.

## Garion for complete satisfaction

Garion is equipped with a high resolution FPD.

Its composition, along with other components such as positive/negative inversion, realtime zoom & rotation, as well as advanced noise reduction and optimized contrast/brightness, guarantees much clearer and enhanced image quality.

## Attachable Grid

The Grid can be attached and detached, allowing low-dose examination for each part.

## Dual Laser Pointer

Using the dual laser pointer, it is possible to set the patient's position without unnecessary exposure.

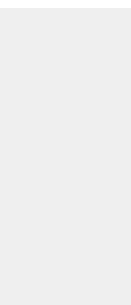
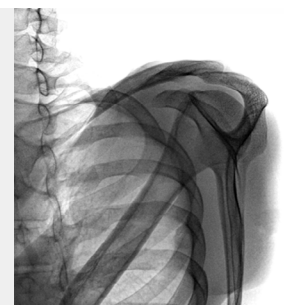
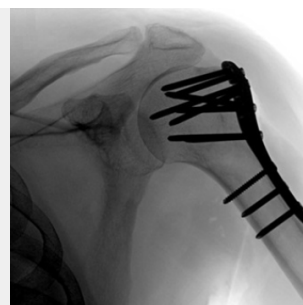
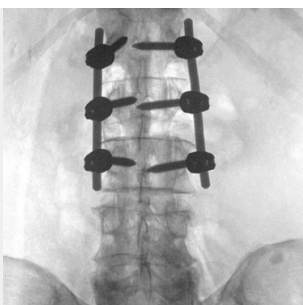


# 1. Software

## Powerful Digital Image Processing and Display

Whatever the surgical and clinical environment is, you will benefit from the most optimized output.

The combination of Dynamic FPD means that Garion provides the highest quality on screen image. Our advanced image-processing technology enables you to utilize various functions such as image flip (horizontal & vertical), image rotation (360°), realtime zoom, noise reduction, and realtime edge enhancement, etc.



# 2. Specification

## X-RAY GENERATOR

---

1) Power output		5.0 kW
2) Fluoroscopy		
- Continuous Mode	kV / mA range	40 ~ 110 kV / 0.3 ~ 6.3 mA
- Pulsed Mode	kV / mA range	40 ~ 125 kV / 0.3 ~ 32 mA
	Frame rate	1, 2, 5, 10, 15 fps
3) Radiography	kV / mAs range	40 ~ 125 kV / 0.2 ~ 100 mAs

## X-RAY TUBE

---

1) Anode Type	Rotating Anode
2) Anode Heat Capacity	200 kHU
3) Focal Spot	0.3 / 0.6 mm

## DETECTOR

---

1) Sensor Panel Technology	a-Si:TFT with direct dep. CsI
2) Active Area	209.9 x 209.9 mm
3) Matrix Size	1,024 x 1,024 pixels
4) Pixel Pitch	205 $\mu$ m

## GEOMETRY

---

1) Rotation	Orbital	150°
	Pivot	360° ( $\pm$ 180°)
	Swing	30° ( $\pm$ 15°)
2) Movement	Vertical	200 mm
	Horizontal	400 mm
3) Depth		640 mm
4) Free Space		784 mm
5) SID		980 mm

## WORKSTATION

---

1) CPU		Intel Core i5 6GEN
2) Memory		16 GB
3) Hard Disk		1 TB
4) UPS	Power Supply Time	60 Min. (Load 90 W)

## MONITORS

---

1) Workstation Display	19" x 2
2) Operation Display	24" Touch

※ Note : Specifications subject to change without notice.



## 3. Service

### **Customer Oriented**

Your values are of utmost importance to us. As a leading medical diagnostic device manufacturer, we take full responsibility in satisfying your needs by providing high quality products to the global market. Also, by collaboration user friendly interface and design, we actualize your desires and needs. We promise to stand by your side and always strive to add pleasure at your work place.

### **Approved Quality**

We put great deal of emphasis on well-being of mankind. SG Healthcare upholds this value by manufacturing reliable and reasonable medical diagnostic devices. And also by distributing our quality products all over the world through fortified SG Healthcare's global network, we wish to present better life for every little breath.

### **24/7 Fast Response**

We embrace all challenges and counter act with pride and quickness to all claims. Fast reponse offers customers with satisfaction and improves reliavility of SG Healthcare. We strive to provide the most comprehensive service for every claim, regardless of location and time. This is how we have maintained friendship over 60 countries worldwide.



**How to reach us**

[www.sghealthcare.com](http://www.sghealthcare.com)

[sales@sghealthcare.com](mailto:sales@sghealthcare.com)

**Tel** +82 (0)2 449 6908 / **Fax** +82 (0)2 449 6909